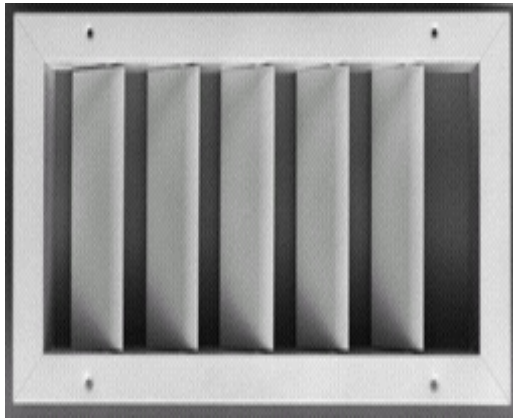


# 150 LT (H or V) STAINLESS STEEL

## Single Deflection Long Throw Diffuser



The series 150LT long throw supply grille provides effective directional control of large volumes of air flow. Each bar is pivoted which allows for custom air flow.

The deflector bars are spaced on either 1.5" or 3" centers, as specified. Each bar is adjusted for the desired air deflection without affecting the setting of any other bar.

Available with horizontal face bars, 150LT H, or vertical face bars, 150LT V. Constructed from type 304 stainless, satin finish standard. Type 316 stainless steel also available at an additional cost.

Ideal for factories or plants where large volumes of air must be controlled.

### Factory Standards

- Deflector blades individually Adjusted.
- Type 304 stainless.
- Mounting screwholes.
- #10 x 1.5" stainless pan head sheet metal screws.
- #4 satin polished finish.

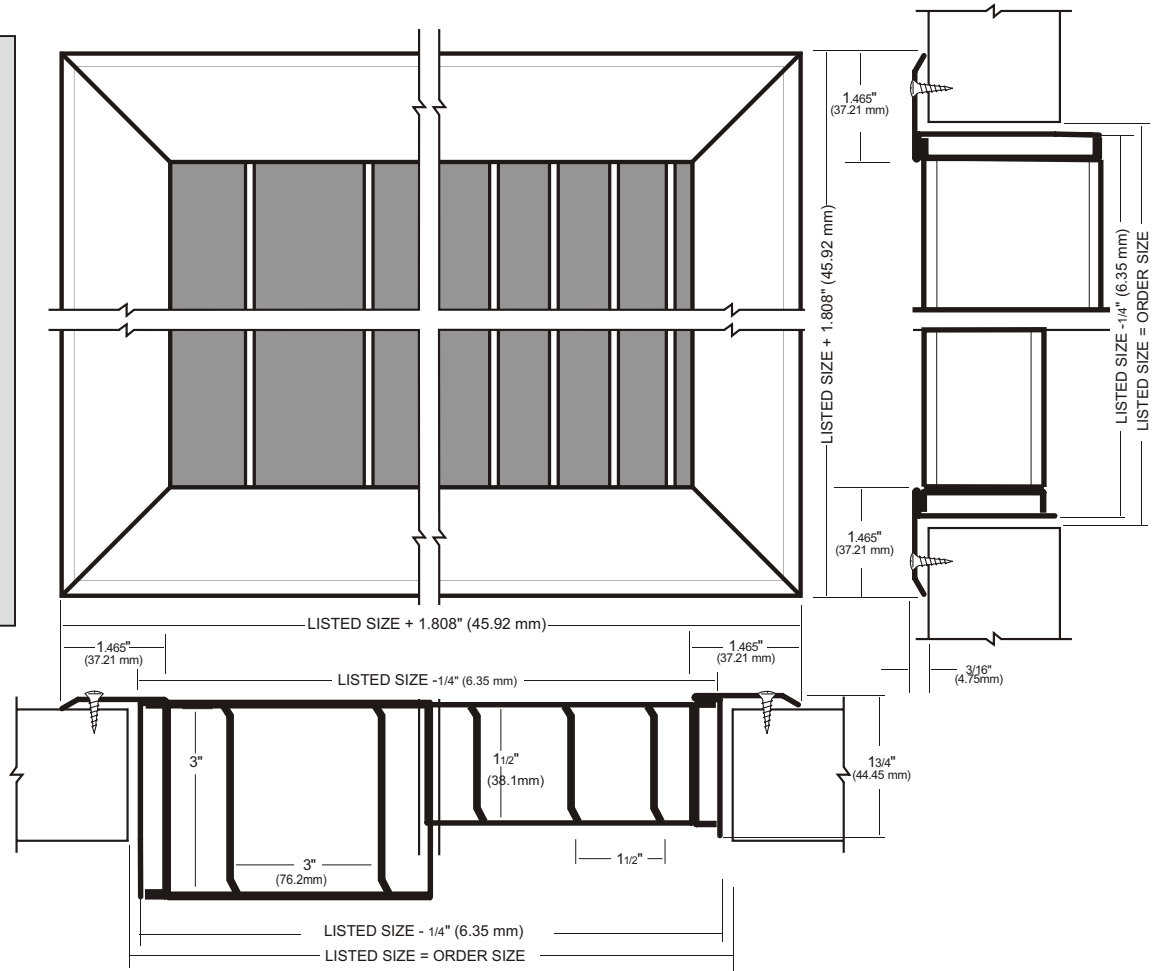
### Factory Options (extra charge)

- Type 316 stainless, satin finish.
- 1.5" or 3" blades and blade Centers.
- Painted finish

Minimum W x H	Maximum W x H
12" x 12"	60" x 60"

### U.S. Units to Metric Conversion

INCHES x (25.4) = MILLIMETERS



CUSTOMER ORDER NO. --				
JOB --				
ARCHITECT --				
CUSTOMER --				
QTY	ORDER SIZE (W x H)	DAMPER (Y/N)	TAG	304 OR 316