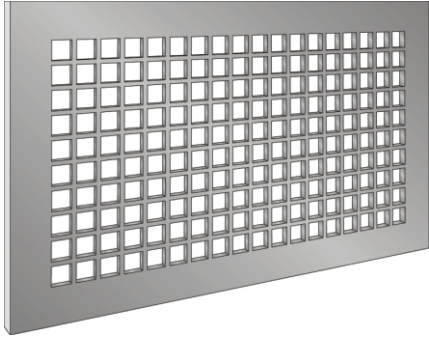


DESIGN 13/16" GRILLES

Lattice Grilles

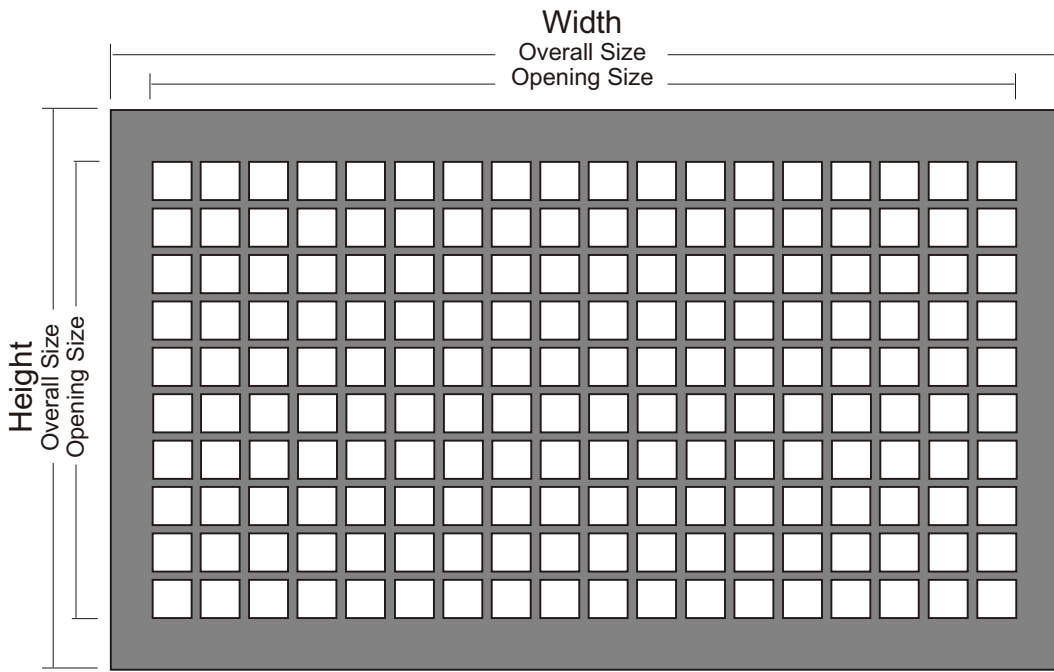


The simplicity of the Plain Lattice Architectural Grille permits use with any style of architecture. Grilles can be used for applications requiring low profile grille coverings for supply or return air in ceilings, sidewalls, sills, transoms, baseboards and soffits. Used in security and high impact applications ranging from schools to high security prisons.

13/16" Square Openings with 3/16" Fret Bars
POSSIBLE DAYLIGHT OPENINGS
 (Add 1" for additional holes)

Factory Standards	
<input checked="" type="checkbox"/> Steel 14 ga., 12 ga., 10 ga. (mill or prime finish.)	U.S. Units to Metric Conversion INCHES x (25.4) = MILLIMETERS
<input checked="" type="checkbox"/> Aluminum 12 ga., 1/8" (mill finish.)	
<input checked="" type="checkbox"/> Stainless 14 ga. (satin finish.)	
<input checked="" type="checkbox"/> Brass or Bronze 12 ga., 1/8" (satin finish.)	
<input checked="" type="checkbox"/> 69% free area.	
Factory Options	
<input checked="" type="checkbox"/> Countersunk screwholes and screws, specify.	

No. of Holes	Daylight opening in inches
2	1 13/16
3	2 13/16
4	3 13/16
5	4 13/16
6	5 13/16
7	6 13/16
8	7 13/16
9	8 13/16
10	9 13/16
11	10 13/16
12	11 13/16
13	12 13/16
14	13 13/16
15	14 13/16
16	15 13/16
17	16 13/16
18	17 13/16
19	18 13/16
20	19 13/16
21	20 13/16
22	21 13/16
23	22 13/16
24	23 13/16
25	24 13/16
26	25 13/16
27	26 13/16
28	27 13/16
29	28 13/16
30	29 13/16
31	30 13/16
32	31 13/16
33	32 13/16
34	33 13/16
35	34 13/16
36	35 13/16
37	36 13/16



DESIGN 13/16" -- 69% FREE AREA

CUSTOMER ORDER NO. --							
JOB --							
ARCHITECT --							
CUSTOMER --							
QTY	OVERALL SIZE (W x H)	DAMPER (Y/N)	MATERIAL	GAUGE	# SCREW HOLES W x H	FINISH	TAG