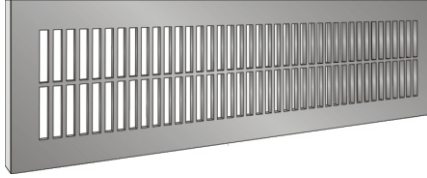


# DESIGN E GRILLES

## Lattice Grilles



The simplicity of the Plain Lattice Architectural Grille permits use with any style of architecture. Grilles can be used for applications requiring low profile grille coverings for supply or return air in ceilings, sidewalls, sills, transoms, baseboards and soffits. Used in security and high impact applications ranging from schools to high security prisons.

Design "E" is made up of slots 1/4" x 127/32" with all cross bars 5/32". Be sure to indicate Width and Height.

### POSSIBLE DAYLIGHT OPENINGS

No. of Holes	Daylight Width in inches	Daylight Height in inches
1	1/4	1 27/32
2	21/32	3 27/32
3	1 1/16	5 27/32
4	1 15/32	7 27/32
5	1 7/8	9 27/32
6	2 9/32	11 27/32
7	2 11/16	13 27/32
8	3 3/32	15 27/32
9	3 1/2	17 27/32
10	3 29/32	19 27/32
11	4 5/16	21 27/32
12	4 23/32	23 27/32
13	5 1/8	25 27/32
14	5 17/32	27 27/32
15	5 5/8	29 27/32
16	6 11/32	31 27/32
17	6 3/4	33 27/32
18	7 1/64	35 27/32
19	7 9/16	37 27/32
20	7 31/32	39 27/32
21	8 1/32	41 27/32
22	8 25/32	43 27/32
23	9 3/16	45 27/32
24	9 9/16	47 27/32
25	9 63/64	49 27/32
26	10 13/32	51 27/32
27	10 13/16	53 27/32
28	11 7/32	55 27/32
29	11 5/8	57 27/32
30	12 1/32	59 27/32
31	12 3/64	61 27/32
32	12 27/32	63 27/32
33	13 1/32	65 27/32
34	13 41/64	67 27/32
35	14 1/16	69 27/32
36	14 15/32	71 27/32
37	14 7/8	73 27/32
38	15 9/32	75 27/32
39	15 43/64	77 27/32
40	16 3/32	79 27/32
41	16 1/2	81 27/32
42	16 57/64	83 27/32
43	17 5/16	85 27/32
44	17 23/32	87 27/32
45	18 1/8	89 27/32
46	18 17/32	91 27/32
47	18 59/64	93 27/32
48	19 21/64	95 27/32
49	19 47/64	97 27/32
50	20 9/64	99 27/32

#### Factory Standards

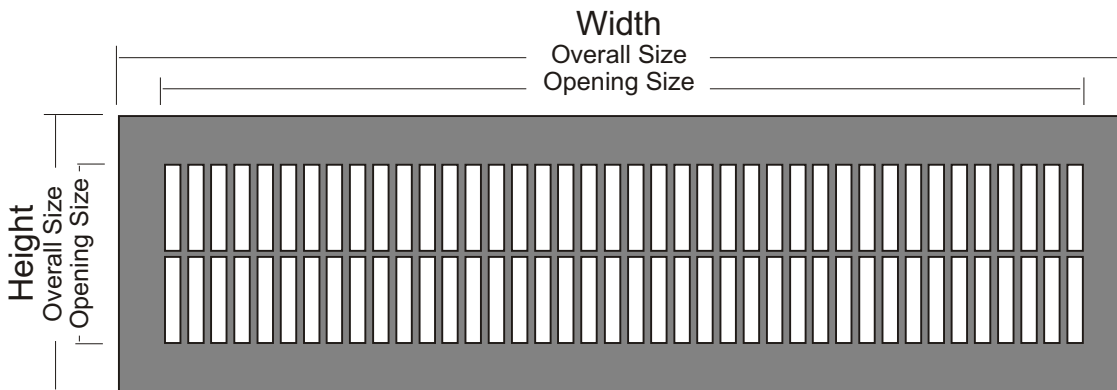
- Steel 14 ga., 12 ga., 10 ga. (mill or prime finish.)
- Aluminum 12 ga., 1/8" (mill finish.)
- Stainless 14 ga. (satin finish.)
- Brass or Bronze 12 ga., 1/8" (satin finish.)
- 54% free area.

#### Factory Options

- Countersunk screwholes and screws, specify.

#### U.S. Units to Metric Conversion

INCHES x (25.4) = MILLIMETERS



**DESIGN E -- 54% FREE AREA**

CUSTOMER ORDER NO. --							
JOB --							
ARCHITECT --							
CUSTOMER --							
QTY	OVERALL SIZE (W x H)	DAMPER (Y/N)	MATERIAL	GAUGE	# SCREW HOLES W x H	FINISH	TAG